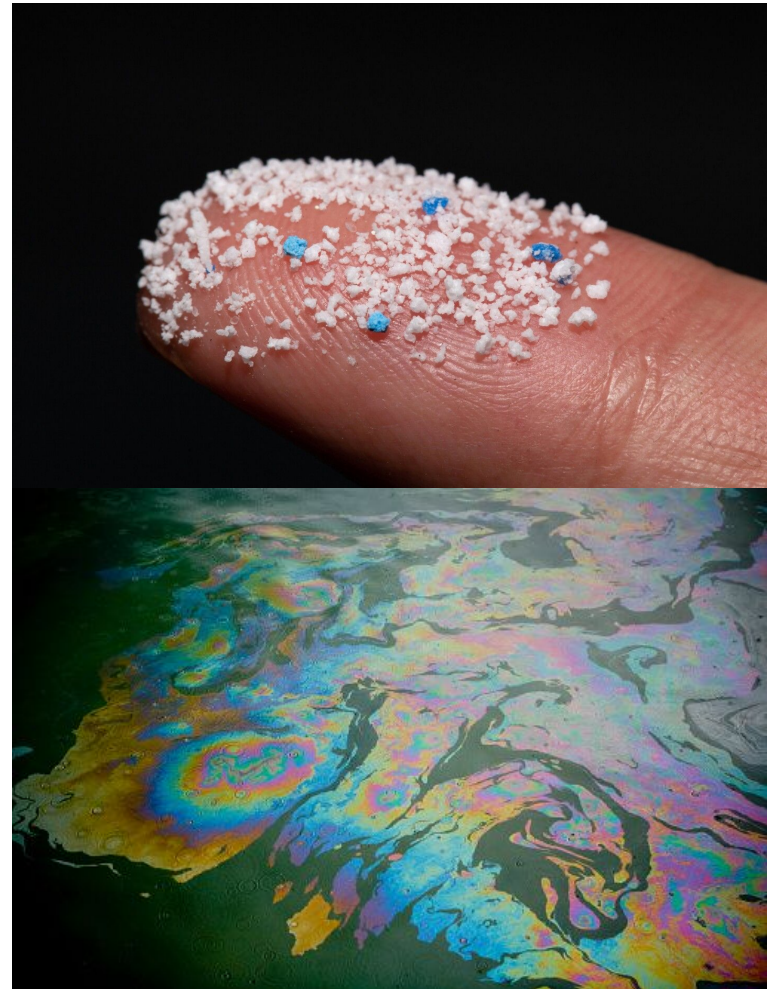


A coastal scene featuring waves crashing against dark, jagged rocks. The water is a vibrant turquoise color, and the sky is a pale, hazy blue. In the foreground, there are large, dark, angular rocks. A large, white, irregularly shaped graphic is overlaid on the center of the image, containing the text 'SA PEDRA' in a stylized, bold, sans-serif font. The text is white with a slight shadow, making it stand out against the background. The overall composition is dynamic and visually striking.

SA
PEDRA



Pollution
Microplastics
Fuel and other
liquids





**Ways to detect the
pollution**

**Huge devices - not
in line with the
environment**

**Only in some
points**





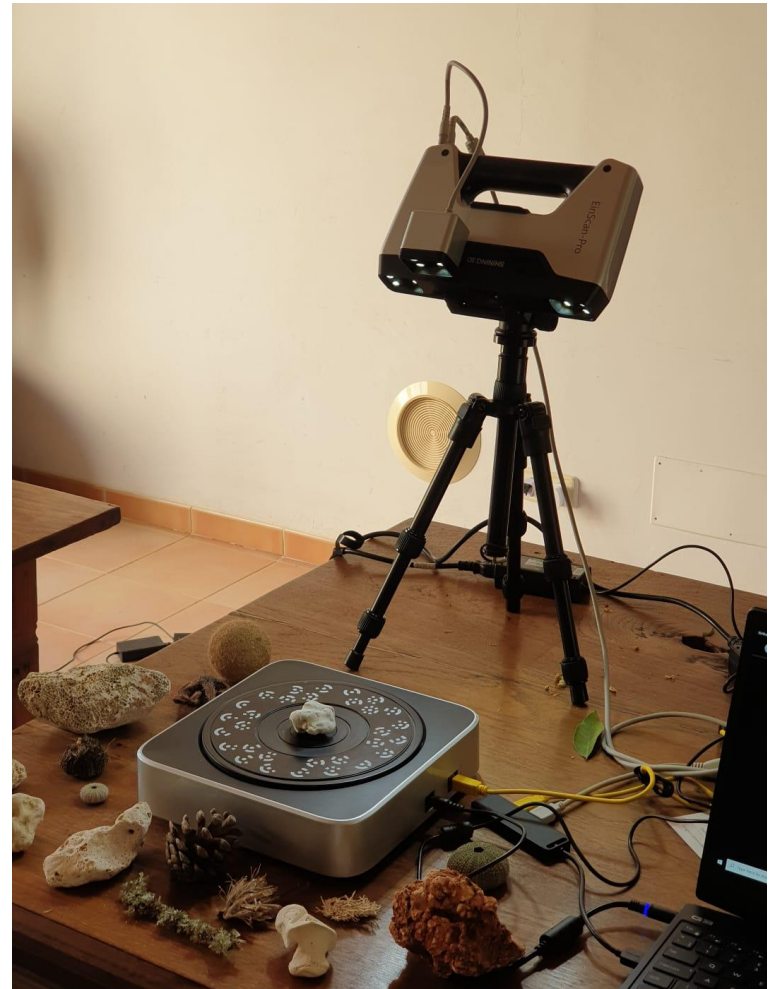
**Using natural
shapes for
environmental
sensing**
**Combine sensors
with nature**



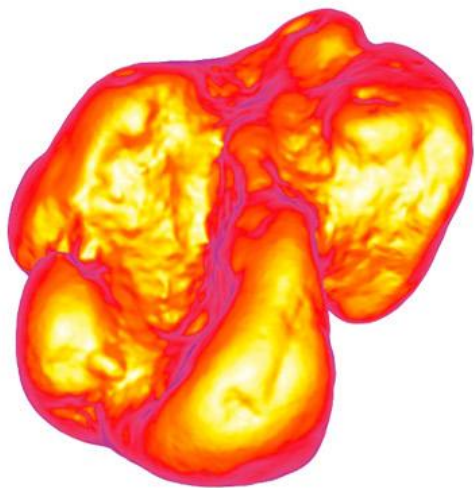


3D scanning and meshing

Creating 3D model from a rock taken from a beach



SA
PEDRA

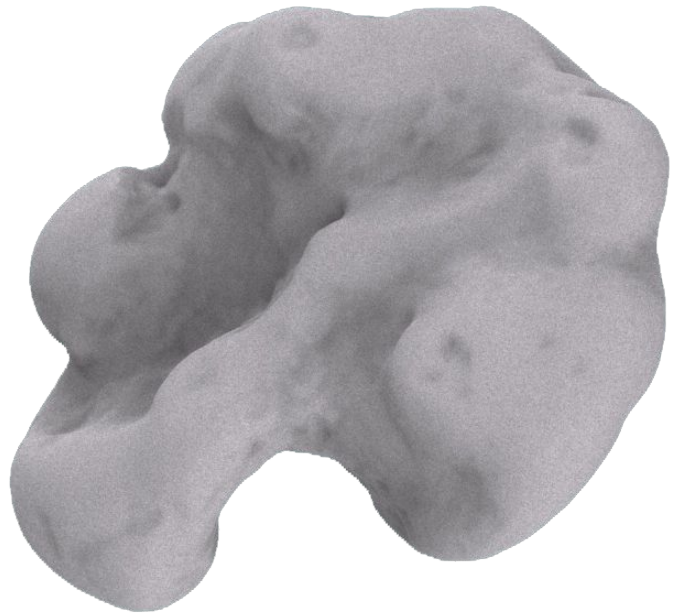




**3D printing in
oyster shells
(Paula, Marina and
Paula B.'s project)
Sea materials
In line with the
environment**



SA
PEDRA

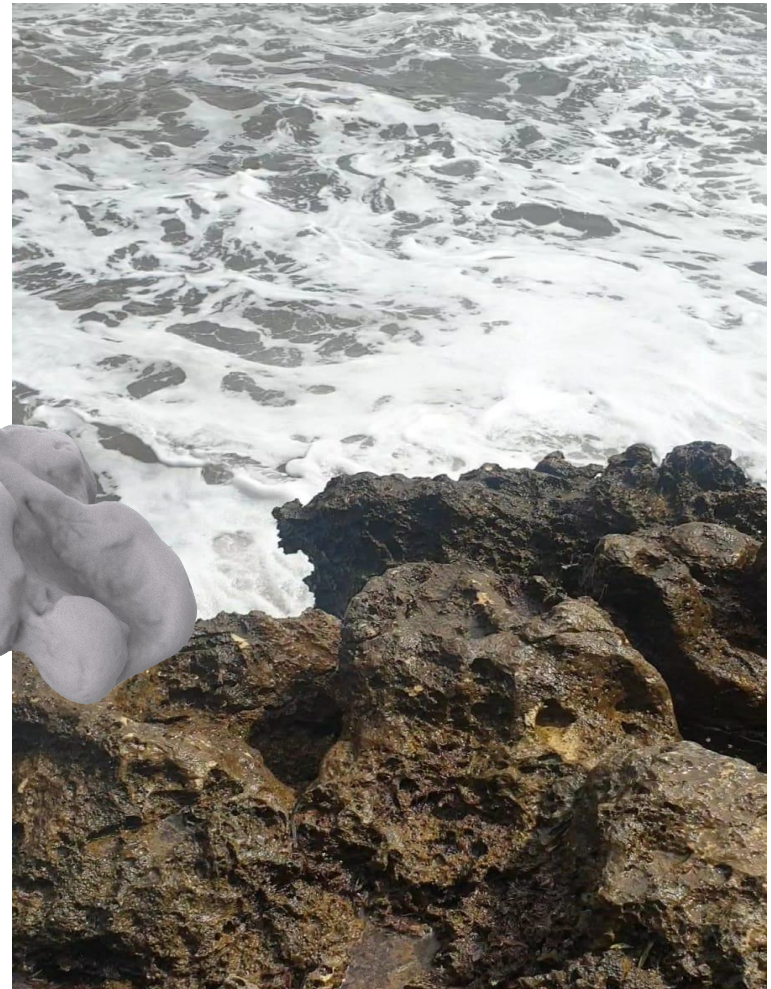




**Adding
electronics
Water quality
sensor
Microplastics
detector**



**Application in
context: Beaches
Placed near to
rocks
Distributed data
collection system**





Other applications: Wearables

**Can be used as a
wearable to get
data while taking a
swim anywhere**





SA
PEDRA